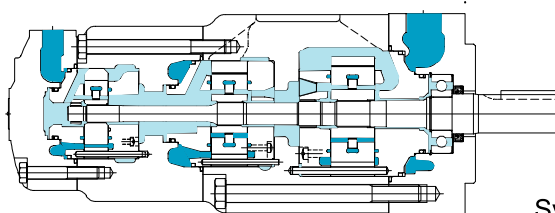


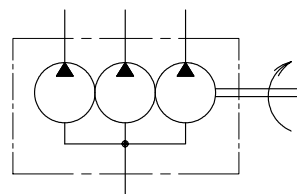
Low noise triple fixed displacement vane pumps SQP series

B
30

VANE PUMPS



Symbol



Model Code

(F3) - SQP432 - 60 - 38 - 15 - 86 C C C (2) - (LH) - 18

1 2 3 4 5 6 7 8 9 10 11 12

- 1 Fluid
Omit for mineral oil
F3: phosphate ester
F11: water glycol
- 2 Low noise fixed displ. triple vane pump
SQP211 Series
SQP311,321 Series
SQP421,431,432 Series
- 3 Shaft end pump displacement

Series	Displacement
SQP2**	10, 12, 14, 15, 17, 19, 21
SQP3**	17, 21, 25, 30, 32, 35, 38
SQP4**	30, 35, 38, 42, 50, 60
- 4 Middle pump displacement

Series	Displacement
SQP*1*	2, 3, 4, 5, 6, 7, 8, 9, 11, 12, 14
SQP*2*	10, 12, 14, 15, 17, 19, 21
SQP*3*	17, 21, 25, 30, 32, 35, 38
- 5 Cover end pump displacement

Series	Displacement
SQP**1	2, 3, 4, 5, 6, 7, 8, (9), (11), (12), (14)
SQP**2	10, 12, 14, 15, 17, 19

Note: Applicable series with displacements indicated by () are limited.
See page B31.
- 6 Shaft
86: parallel sq. key
- 7 Shaft end pump outlet position (viewed from cover end)
A: opposite inlet
B: 90' CCW from inlet
C: inline with inlet
D: 90' CW from inlet
- 8 Middle pump outlet position (viewed from cover end)
SQP211,311,321,421
A: 135' CCW from inlet
B: 45' CCW from inlet
C: 45' CW from inlet
D: 135' CW from inlet
SQP431,432
A: opposite inlet
B: 90' CCW from inlet
C: inline with inlet
D: 90' CW from inlet
- 9 Cover end pump outlet position (viewed from cover end)
SQP211,311,431,432
A: 135' CCW from inlet
B: 45' CCW from inlet
C: 45' CW from inlet
D: 135' CW from inlet
SQP321,421
A: opposite inlet
B: 90' CCW from inlet
C: inlet with inlet
D: 90' CW from inlet
- 10 Pump mounting
Omit for flange mounting
2*: foot mounting
Shaft end outlet position to foot mount surface (see page B28)

Foot mount. code	Shaft end pump outlet position to foot surface (viewed from shaft end)
2	up (12 o'clock)
23	right (3 o'clock)
26	down (6 o'clock)
29	left (9 o'clock)
- 11 Rotation (viewed from shaft end)
Omit for CW
LH: CCW
- 12 Design no.