

Series *DH*

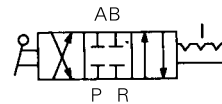
Hand Valve



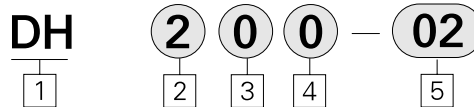
- PORTING OF Rc(PT) 1/4, 3/8 AND 1/2
- ALUMINUM DIE CASTING DESIGN FOR HEAVY APPLICATIONS
- DETENTED CENTER POSITION

Symbol

Closed Center



How to Order



1 Series DH

2 Body Size (Basic Size)

2: Cv 0.4(1/4 Rc(PT) Only)

3: Cv 1.1(3/8 Rc(PT) Only)

4: Cv 3.1(1/2 Rc(PT) Only)

3 Piping & Mounting Position

0 : Piping-Side

Mounting-Body

4 Position Symbol

0 : 3 Position

Closed Center

2 : 2 Position

5 Port Size

02 : Rc(PT) 1/4

03 : Rc(PT) 3/8

04 : Rc(PT) 1/2

Model

Series	Port Size Rc(PT)	Number of Positions	Piping	Model	Effective Orifice mm ² (Cv factor)	Weight kgf
				Body Ported		
DH2	1/4	3(Closed Center) 2(Position)		DH200-02	7.5(0.4)	0.55
				DH202-02		
DH3	3/8	3(Closed Center) 2(Position)		DH300-03	20(1.1)	0.9
				DH302-03		
DH4	1/2	3(Closed Center) 2(Position)		DH400-04	55(3.1)	1.6
				DH402-04		

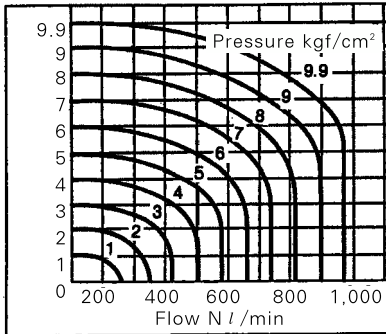
Standard Specifications

Fluid	Air
Proof Pressure	15kgf/cm ² {1.5MPa}
Max. Operating Pressure	9.9kgf/cm ² {990kPa}
Ambient and Operating Fluid Temperature	5~60°C
Operating Angle	90°

Flow Characteristics

DH200

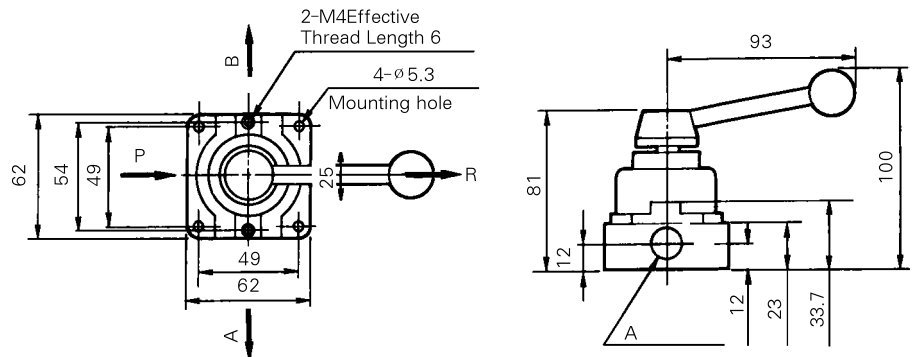
Effective area $S = 7.5 \text{ mm}^2$



Dimensions

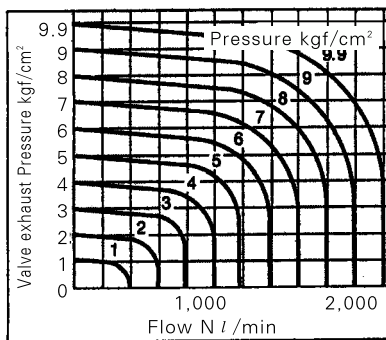
(mm)

DH200-02/Side Piping

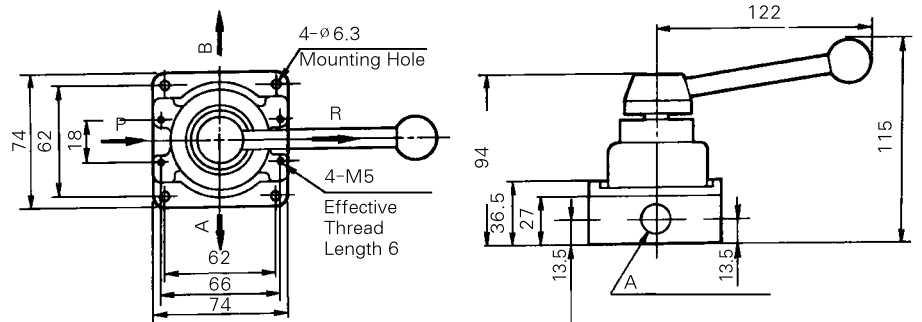


DH300

Effective area $S = 20 \text{ mm}^2$

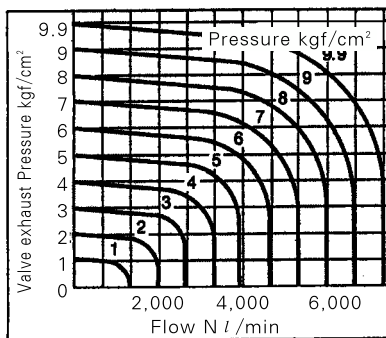


DH300-03/Side Piping

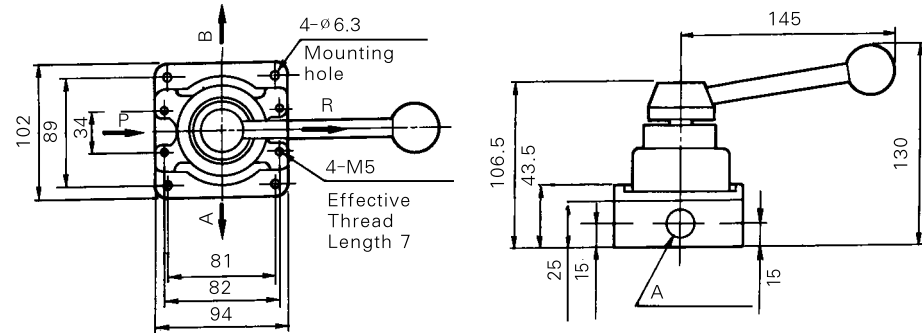


DH400

Effective area $S = 55 \text{ mm}^2$



DH400-04/Side Piping



DW

DS

DV

DX2

DP

DM

DH

DT

DC